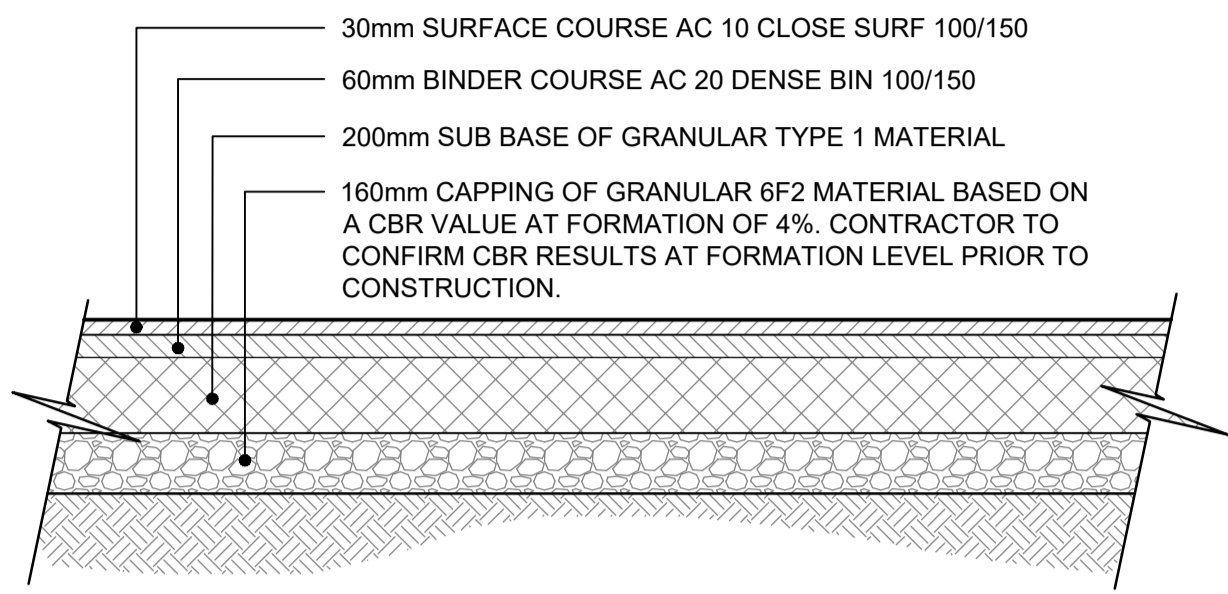
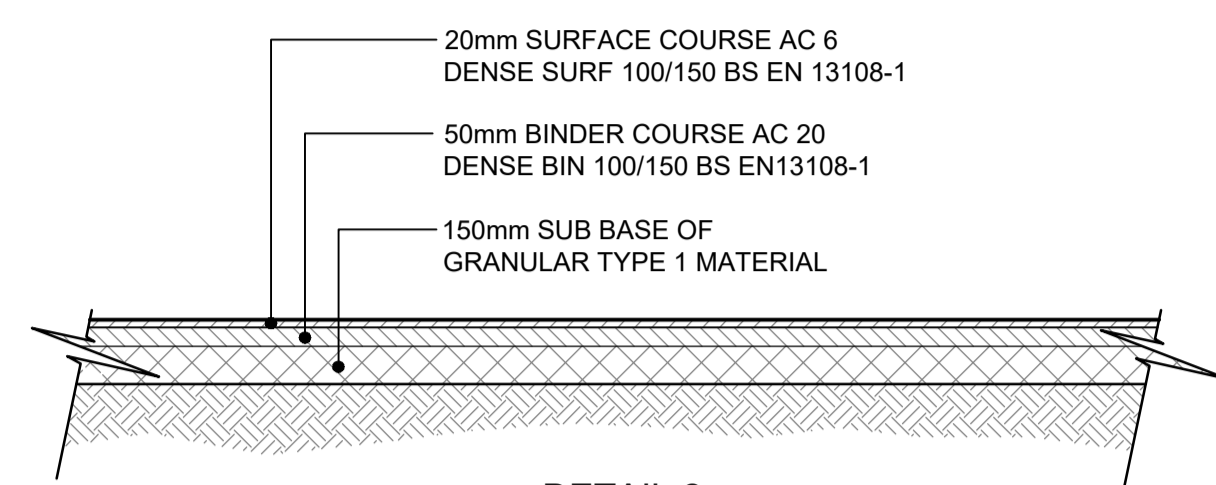


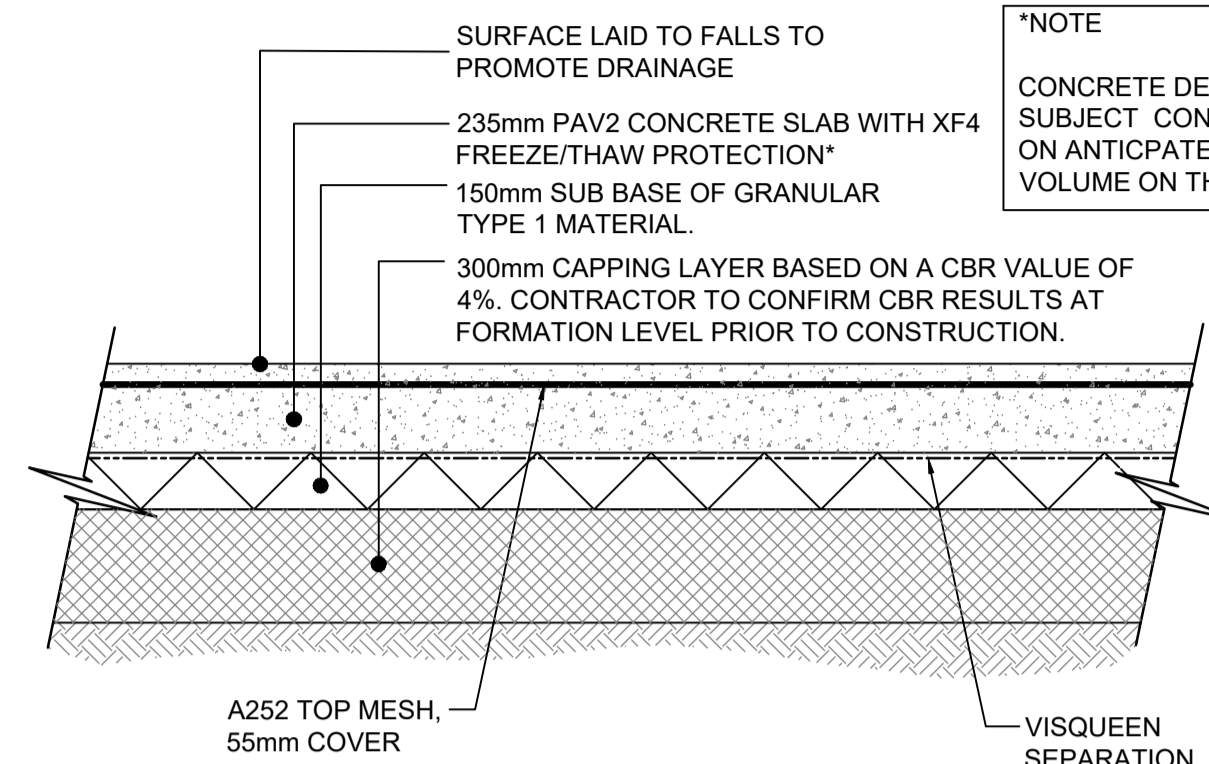
IT IS ASSUMED NO HGV'S WILL ACCESS THE CAR PARK AREA. IF HGV ACCESS IS REQUIRED THEN ADDITIONAL BASE COURSE WILL BE REQUIRED.



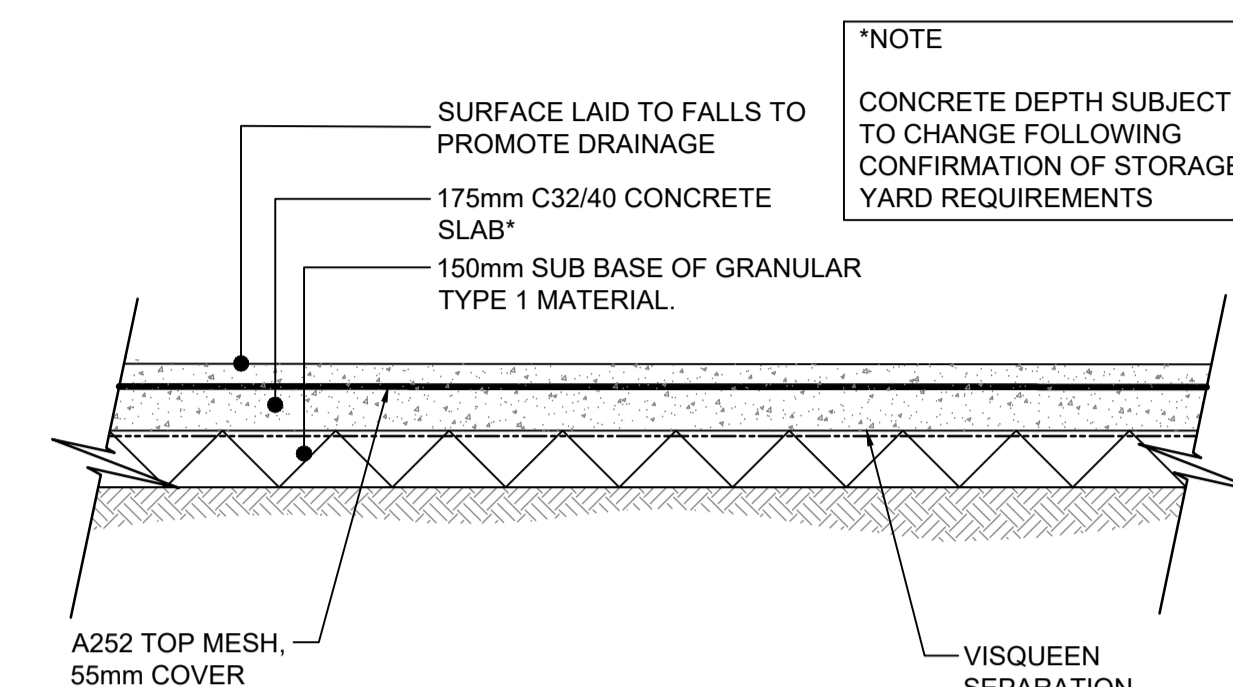
DETAIL 1
ASPHALT CAR PARK
(NO HGV ACCESS)
SCALE 1:20



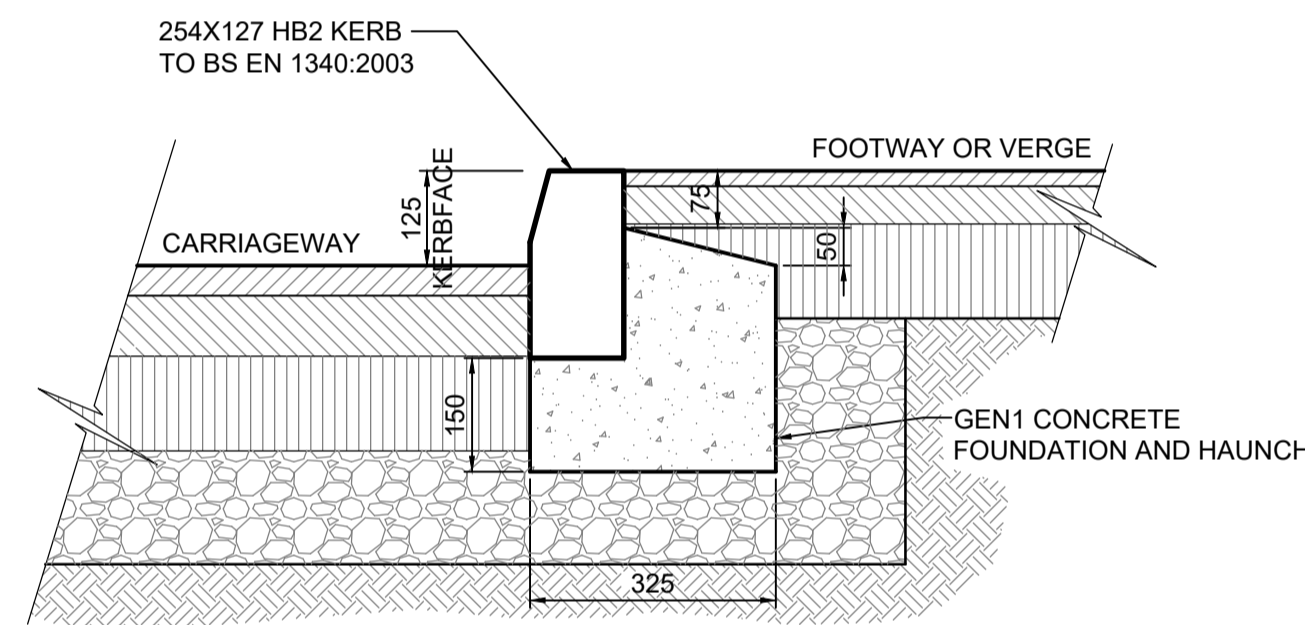
DETAIL 2
ASPHALT FOOTPATH
(WITH 5T MEWP ACCESS)
SCALE 1:20



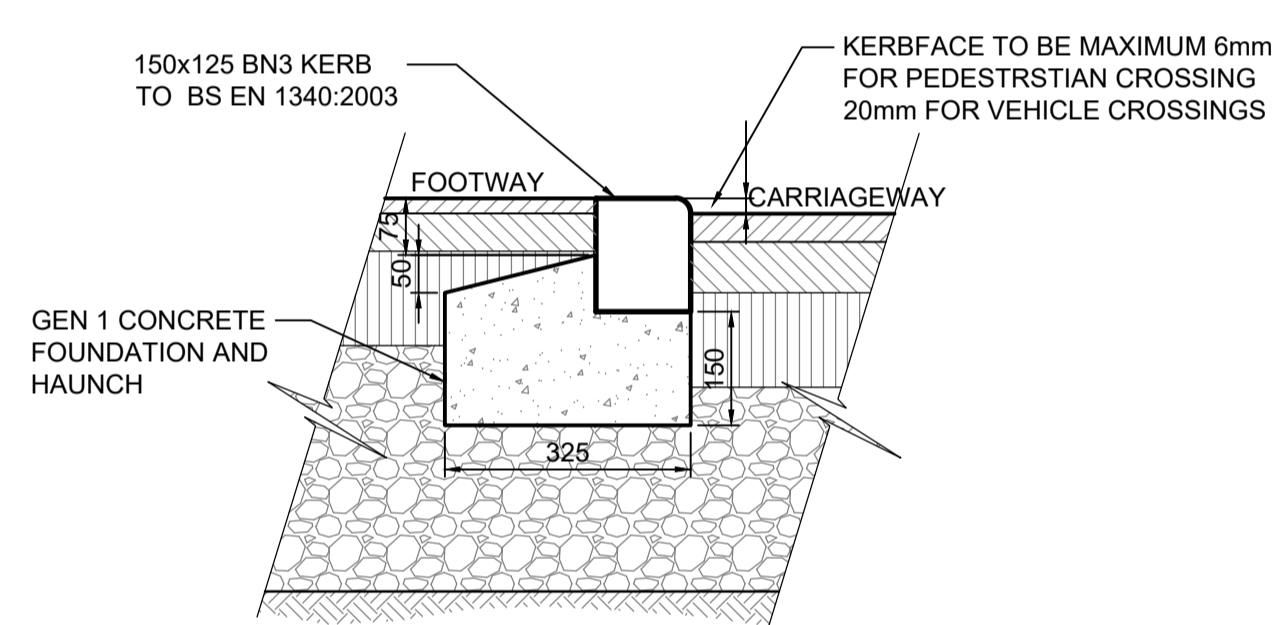
DETAIL 3
REINFORCED CONCRETE SLAB
(TRAFFICKED)
SCALE 1:20



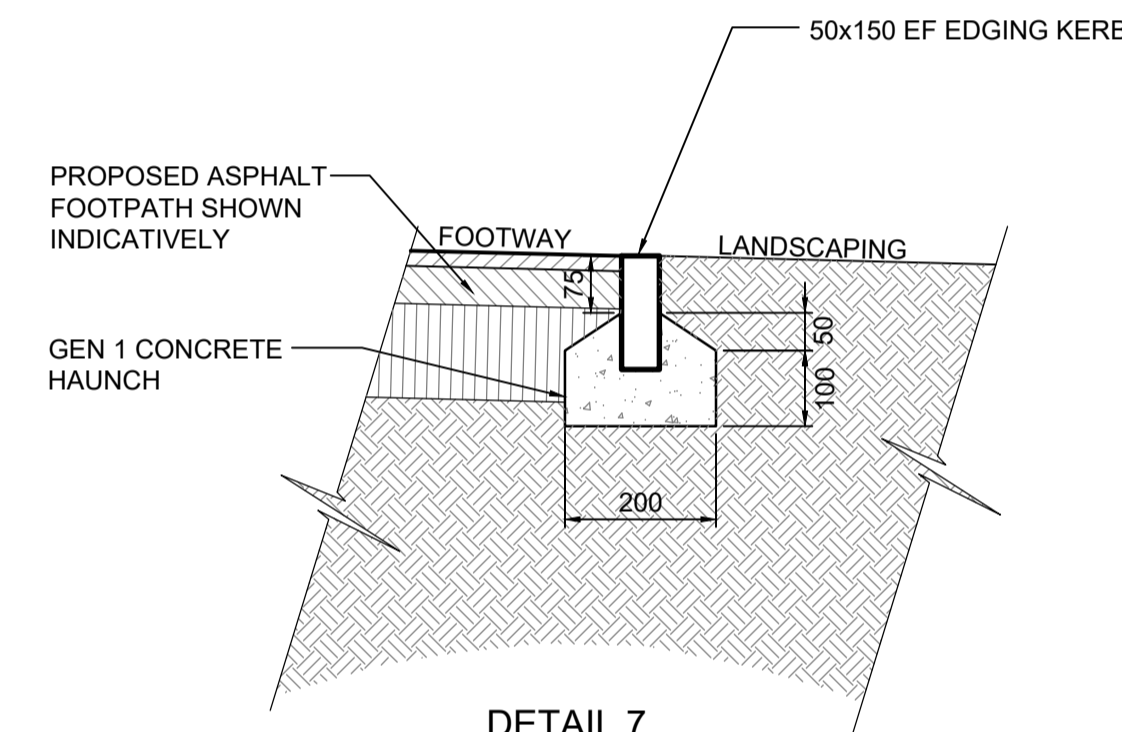
DETAIL 4
REINFORCED CONCRETE SLAB
(STORAGE YARD)
SCALE 1:20



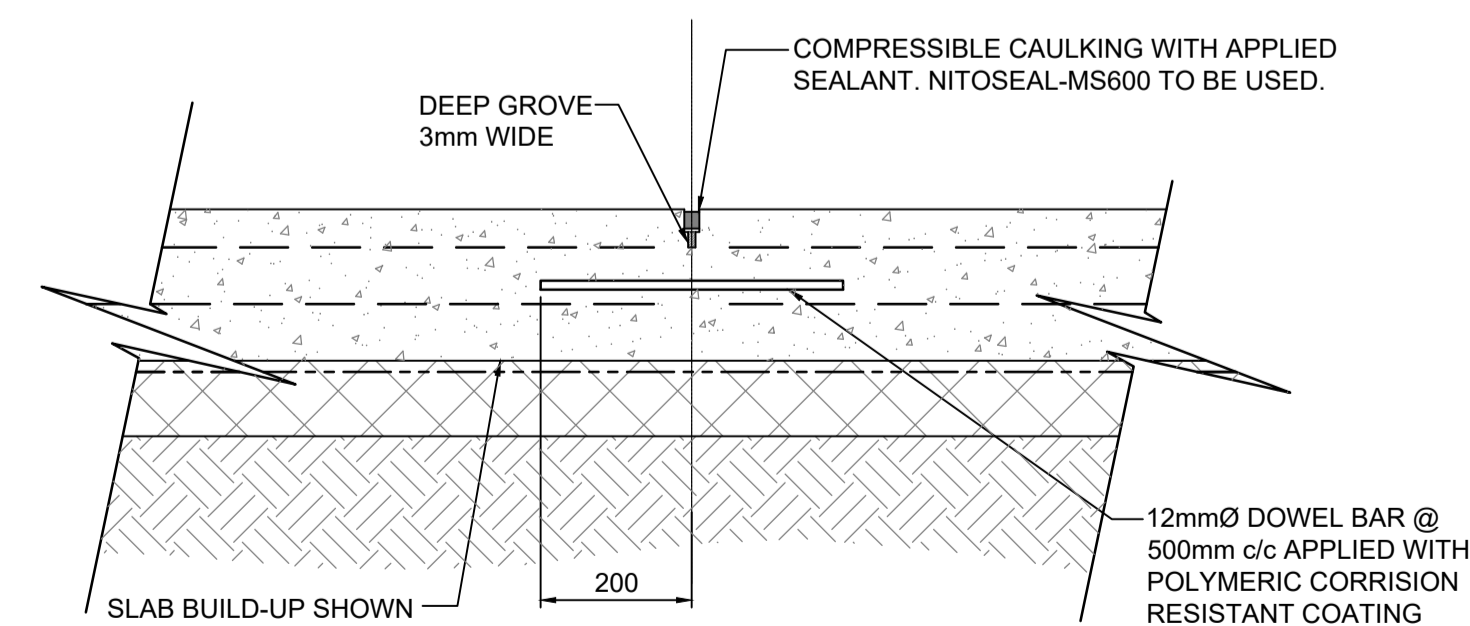
DETAIL 5
HB2 ROAD KERB
SCALE 1:10



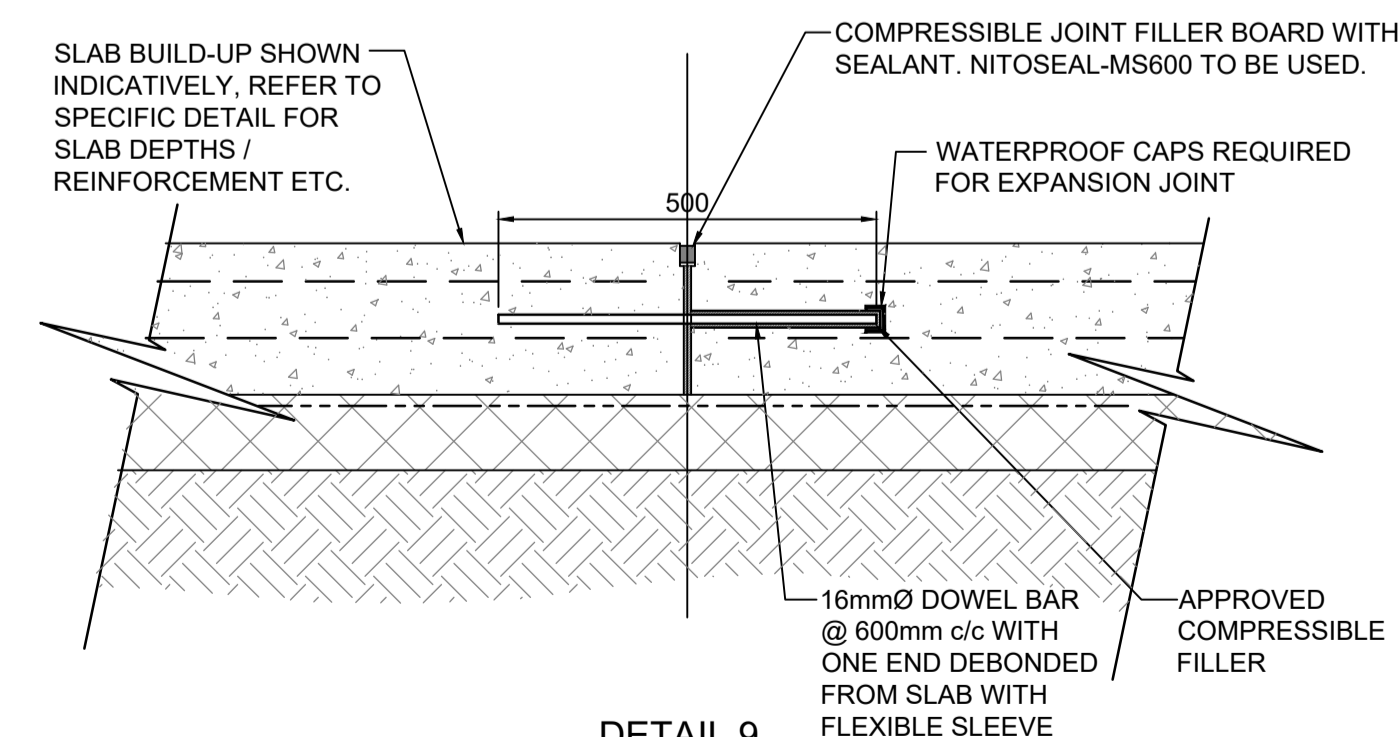
DETAIL 6
BN3 KERB
SCALE 1:10



DETAIL 7
EF EDGING KERB
SCALE 1:10



DETAIL 8
CONTRACTION JOINT DETAIL
SCALE 1:10



DETAIL 9
EXPANSION JOINT DETAIL
SCALE 1:10

NOTES:

- THIS DRAWING IS PRELIMINARY AND IS SUBJECT TO CHANGE DEPENDING ON FURTHER DEVELOPMENT OF THE G.A. AND SITE LAYOUT.
- TO BE READ IN CONJUNCTION WITH ALL RELEVANT KENNEDY REDFORD DRAWINGS AND SPECIFICATION.
- ALL DIMENSIONS ARE IN mm UNLESS STATED OTHERWISE.
- REFER TO THE MANUFACTURER'S INSTALLATION GUIDANCE FOR ALL SPECIFIED PRODUCTS.
- ALL DIMENSIONS TO BE CHECKED ONSITE BY THE CONTRACTOR AND ANY DISCREPANCIES BROUGHT TO THE ENGINEERS AND ARCHITECTS ATTENTION IN ACCORDANCE WITH THE SPECIFICATION.
- ALL MATERIAL WITHIN 450mm OF GROUND LEVEL TO BE NON FROST SUSCEPTIBLE.
- ALL THICKNESSES OF GRANULAR MATERIAL ARE AFTER COMPACTION.
- ALL ROAD PAVEMENT BUILD-UP DRAWINGS TO BE READ IN CONJUNCTION WITH NBS Q SERIES SPECIFICATION.
- ALL TOLERANCES FOR PAVEMENT LAYERS TO BE IN ACCORDANCE WITH SPECIFICATION FOR HIGHWAY WORKS, SERIES 700.
- CONTRACTOR SHOULD ENSURE THAT FORMATION LEVELS ARE ADEQUATELY PROTECTED DURING ADVERSE WEATHER.
- FORMATION TO BE TRIMMED AND ROLLED TO SPECIFICATION FOR HIGHWAY WORKS, SERIES 600 PRIOR TO LAYING PAVEMENT MATERIAL.
- FORMATION TO BE CHECKED FOR SOFT SPOTS PRIOR TO LAYING PAVEMENT MATERIALS. ALL SOFT SPOTS TO BE REMOVED AND REPLACED WITH 6F2 CAPPING MATERIAL.
- CAPPING MATERIAL TO BE IN ACCORDANCE WITH THE SPECIFICATION FOR HIGHWAY WORKS, SERIES 600.
- CAPPING MATERIAL TO HAVE MINIMUM CBR OF 15%.
- SUB-BASE TO BE IN ACCORDANCE WITH THE SPECIFICATION FOR HIGHWAY WORKS, SERIES 800.
- SUB-BASE TO HAVE MINIMUM CBR OF 30%.
- ALL KERBS TO BE LAID IN ACCORDANCE WITH BS7533-6.
- DESIGN BASED ON THE CBR RESULTS CALCULATED IN THE TETRA TECH SUPPLEMENTARY GROUND INVESTIGATION REPORT, REFERENCE 784-B030314, DATED 12/10/2021. CONTRACTOR TO CONFIRM CBR RESULTS AT FORMATION LEVEL PRIOR TO CONSTRUCTION.

P01	14.06.22	PRELIMINARY ISSUE	R.B	R.K	R.K
REV	DATE	DESCRIPTION	DRN	CHK	APR

© This drawing is the property of Kennedy Redford Limited and the information can only be reproduced with their prior permission.



CLIENT
GWYNEDD SKIP & PLANT HIRE

PROJECT NAME
GWYNEDD SKIP & PLANT HIRE

DRAWING TITLE
EXTERNAL WORKS DETAILS
ABATTOIR SITE

DATE	SCALE	SHEET SIZE	REV
14.06.22	AS STATED	A1	P01

DRAWING STATUS
S2 - ISSUED FOR INFORMATION

DRAWING NUMBER
220208 - KR - XX - EX - DR - C - 0010